

# X-931 Touchless Wheel Aligner

**NEW ARRIVAL**



Laser



Slide grooves



Cameras

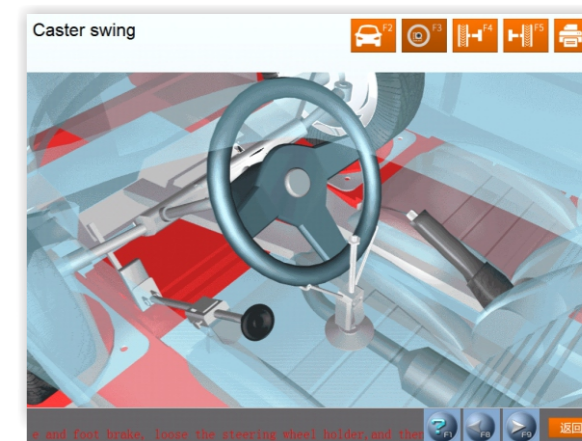
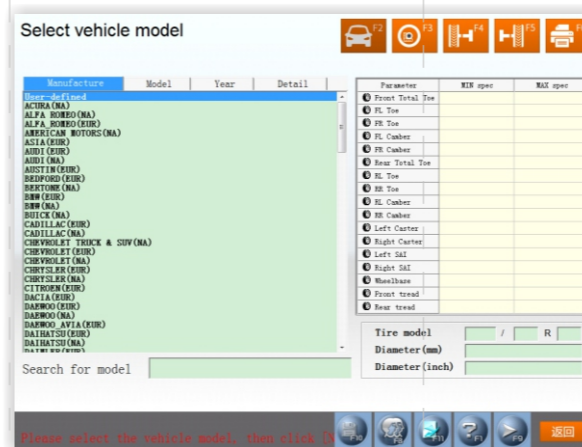


Touchless measurement unit

# X-931 Touchless Wheel Aligner WHEEL EQUIPMENT

X-931 Touchless Wheel Aligner, a professional equipment, can accurately measure automobile tire parameters, including front and rear Toe-in, front and rear camber, caster, Kingpin inclination and thrust angle, etc.

## Software Interface



## Features

- Two Years of Research and Development, It Achieved the Advanced Technology of Laser Imaging
- 5 Times Faster Than the Traditional 3D Wheel Aligner
- Unnecessary to Perform the Vehicle-pushing Compensation Operation
- Without Any Component Touching with the Vehicle Tire or Wheel Rim
- Unnecessary to Mount and Demount the Wheel Clamps and the Targets

## Measurement Parameters

Alignment Parameters	Measurement Range
Total Toe-in	±20°
Individual Toe-in	±10°
Camber	±8°
Caster	±20°
Kingpin inclination	±20°
Thrust Angle	±5°

Comports: Touchless wheel measurement units / A set of PC / Measurement software / Printer / etc.