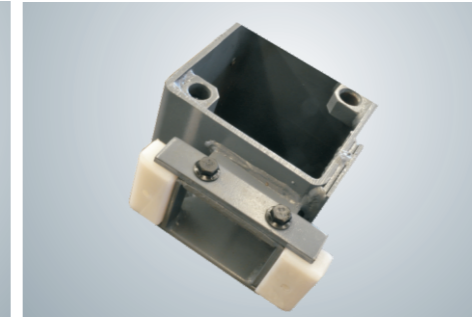




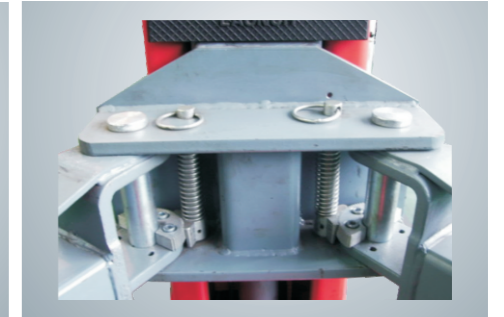
Detail chart



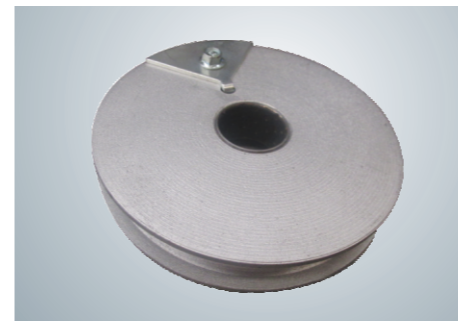
Sheave structure of convenient disassembly



Slider bracket patented designed for easy replacement



Arm Locking mechanism adopt thicker top rod and widetooth block, lift the vehicle more reliably



Pulley equipped with lateral locating plate to keep the wire rope from falling out



Door rubber pad



Floor plate type isolate the cable and the oil pipe to avoid scraping

Features

- Bilateral manual safety unlocking system.
- The cable and oil pipe are fully concealed, with decent and elegant appearance.
- Double hydraulic cylinder and high strength chain drive makes stable and smooth lifting and lowering.
- Wire rope equalization system force synchronous movement of two carriages and effectively prevents vehicle from tilting.
- 24V low voltage control box (IP54 level) ensures operator's safety.
- 24V cylinder travel limit switch effectively protects cylinder and extends its lifespan.
- Door rubber pad protects car door from being damaged in collision
- More lifting pads with different height meets the requirements for light lorries and SUVs.
- Passed 115% dynamic loading test and 150% static loading test.
- CE certificated.

Technical parameters

Model	Rated load	Lifting time	Lifting Height	Overall height	Overall width	Drive Through width	Width between columns	Initial height	Weight	Motor power
TLT235SB	3500kg	≤55s	1920mm	2860mm	3370mm	2486mm	2770mm	110mm	610kg	2.2kW
TLT240SB	4000kg	≤55s	1920mm	2860mm	3370mm	2486mm	2750mm	110mm	645kg	2.2kW

Overall size

