

How to diagnose

4.1 Diagnosis Flowchart

For new users, please follow the operation chart shown in Fig. 4-1 to get familiar with and start using X-431 PRO3.

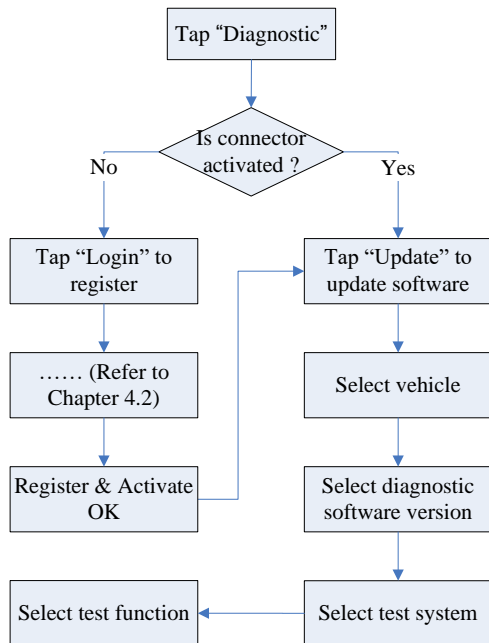


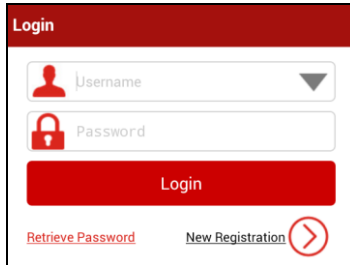
Fig. 4-1

4.2 User Registration, Connector Activation & Diagnostic Software Download

4.2.1 User registration

Tap the X-431 PRO3 icon on the desktop to launch the application, and then tap "Login" to enter the login interface of diagnosis software.

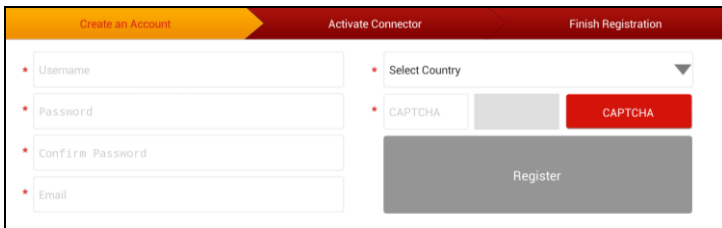
Registration and Update



The login form has a dark red header with the word "Login" in white. Below the header, there are two input fields: "Username" with a person icon and a dropdown arrow, and "Password" with a red padlock icon. A large red button labeled "Login" is positioned below the fields. At the bottom, there are two links: "Retrieve Password" in red and "New Registration" in black with a red circular arrow icon to its right.

Fig. 4-2

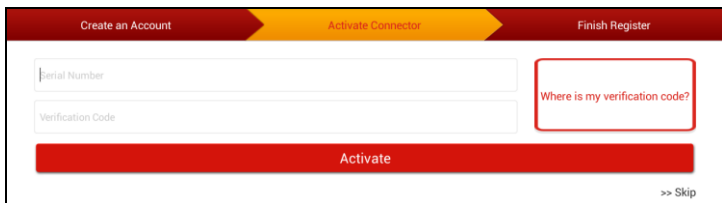
1. If you are a new user, tap “New Registration” to enter registration page. See Fig. 4-3.



The registration form has a dark red header with three tabs: "Create an Account" (highlighted in yellow), "Activate Connector", and "Finish Registration". The form is divided into two columns. The left column contains four input fields, each with a red asterisk: "Username", "Password", "Confirm Password", and "Email". The right column contains a "Select Country" dropdown menu with a red asterisk, a "CAPTCHA" input field with a red asterisk, and a red "CAPTCHA" button. A large grey "Register" button is centered at the bottom of the form.

Fig. 4-3

In Fig. 4-3, fill in the information in each field (Items with * must be filled). After inputting, tap “Register”, a screen similar to the following will appear:



The activation form has a dark red header with three tabs: "Create an Account", "Activate Connector" (highlighted in yellow), and "Finish Register". The form contains two input fields: "Serial Number" and "Verification Code". To the right of these fields is a red-bordered box containing the text "Where is my verification code?". A large red "Activate" button is centered at the bottom. In the bottom right corner, there is a link that says ">> Skip".

Fig. 4-4

In Fig. 4-4, input the Serial Number and Activation Code, which can be found in the password envelope.

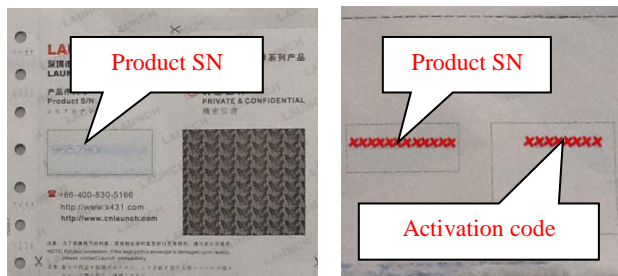


Fig. 4-5

Note: To exit and activate it later, tap “Skip”. In this case, you can activate your connector by tapping “Activate Connector” in “Profile”. For details, please refer to Chapter 4.10.2 Activate Connector.

Tap “Activate” to finish your registration. See Fig. 4-6.



Fig. 4-6

To download the diagnostic software, tap “Go to Update Center”. See Fig. 4-7. Tap “Download Later” to download and install it later.

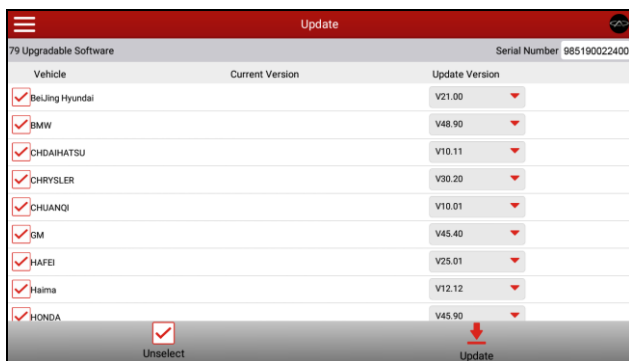


Fig. 4-7

In Fig. 4-7, tap “Update” to start downloading. To pause downloading, tap “Stop”.

To resume it, tap “Continue”. Once download is complete, the system will install the software package automatically.


Notes:

- In process of download, please make sure it is properly connected to the WLAN network. It may take several minutes to finish it, please be patient to wait.
 - To use the VINScan function, you have to download the corresponding diagnostic software and AutoSearch file.
2. If you have registered to be a member, input your name and password, and then tap the “LOGIN” button to enter the main menu screen directly.

4.2.2 Diagnostic software layout



Fig. 4-8

- 1 Tap  to unfold the function menu. Refer to “**Chapter 4.2.3 Function menu**” for details.
- 2 VINSKAN button: Tap it to scan the Vehicle Identification Number (VIN) code of your vehicle. OBD VIN and INPUT VIN are included.
Note: Before using this function, the corresponding diagnostic software and Auto search file need to be downloaded on your tool first while downloading the diagnostic software.
- 3 Vehicle diagnosis software logo: To start diagnosing a vehicle, you have to download the corresponding diagnostic software.
- 4 Vehicle region buttons: Tap different buttons to switch to corresponding vehicles.
- 5 History tab: Generally once a vehicle diagnosis is performed, the system will record the every details of diagnostic process. This function provides a quick access to the tested vehicles and users can resume from the last operation, without the necessity of starting from scratch.

Points after viewing the diagnostic reports.